



plastic
surgery

THE MEETING

Connect. Collaborate. Transform.

HOUSTON



AMERICAN SOCIETY OF
PLASTIC SURGEONS®



THE PLASTIC SURGERY
FOUNDATION™



AMERICAN SOCIETY OF
MAXILLOFACIAL SURGEONS



PlasticSurgeryTheMeeting.com

ROOTED IN REGENERATION*



In preclinical studies, AlloDerm™ RTM was shown to*:

- **Minimize inflammation**¹
- **Enable rapid revascularization** and fibroblast repopulation^{1,2}
- **Transition into host tissue** instead of forming scar tissue²⁻⁴

*Correlation of these results, based on animal studies, to results in humans has not been established.



INDICATIONS

ALLODERM SELECT™ Regenerative Tissue Matrix (ALLODERM SELECT™ RTM refers to both ALLODERM SELECT™ RTM and ALLODERM SELECT RESTORE™ RTM products) is intended to be used for repair or replacement of damaged or inadequate integumental tissue or for other homologous uses of human integument. ALLODERM SELECT™ RTM is intended for use in post-mastectomy breast reconstruction surgical procedures where the use of the acellular dermal matrix (ADM) is considered homologous, such as managing a potential skin defect created from harvesting tissue for use in autologous tissue reconstruction. Examples of uses in post-mastectomy breast reconstruction not considered homologous include use of an ADM to form an extension of the submuscular pocket for placement of a breast implant or tissue expander, and use to prevent expander or implant extrusion, or to constrain the expander or implant in the correct position. This product is intended for use in one patient, on a single occasion. ALLODERM SELECT™ RTM is not indicated for use as a dural substitute or intended for use in veterinary applications.

IMPORTANT SAFETY INFORMATION

CONTRAINDICATIONS

ALLODERM SELECT™ RTM should not be used in patients with a known sensitivity to any of the antibiotics listed on the package and/or Polysorbate 20.

WARNINGS

Processing of the tissue, laboratory testing, and careful donor screening minimize the risk of the donor tissue transmitting disease to the recipient patient. As with any processed donor tissue, ALLODERM SELECT™ RTM is not guaranteed to be free of all pathogens. No long-term studies have been conducted to evaluate the carcinogenic or mutagenic potential or reproductive impact of the clinical application of ALLODERM SELECT™ RTM.

DO NOT re-sterilize ALLODERM SELECT™ RTM. **DO NOT** reuse once the tissue graft has been removed from the packaging and/or is in contact with a patient. Discard all open and unused portions of the product in accordance with standard medical practice and institutional protocols for disposal of human tissue. Once a package or container seal has been compromised, the tissue shall be either transplanted, if appropriate, or otherwise discarded. **DO NOT** use if the foil pouch is opened or damaged. **DO NOT** use if the seal is broken or compromised. **DO NOT** use if the temperature monitoring device does not display "OK". **DO NOT** use after the expiration date noted on the label. Transfer ALLODERM SELECT™ RTM from the foil pouch aseptically. **DO NOT** place the foil pouch in the sterile field.

PRECAUTIONS

Poor general medical condition or any pathology that would limit the blood

supply and compromise healing should be considered when selecting patients for implanting ALLODERM SELECT™ RTM as such conditions may compromise successful clinical outcome. Whenever clinical circumstances require implantation in a site that is contaminated or infected, appropriate local and/or systemic anti-infective measures should be taken.

ALLODERM SELECT™ RTM has a distinct basement membrane (upper) and dermal surface (lower). When applied as an implant, it is recommended that the dermal side be placed against the most vascular tissue. Soak the tissue for a minimum of 2 minutes using a sterile basin and room temperature sterile saline or room temperature sterile lactated Ringer's solution to cover the tissue. If any hair is visible, remove using aseptic technique before implantation.

ALLODERM SELECT™ RTM should be hydrated and moist when the package is opened. **DO NOT** use if this product is dry. Use of this product is limited to specific health professionals (eg, physicians, dentists, and/or podiatrists). Certain considerations should be made to reduce the risk of adverse events when performing surgical procedures using a tissue graft. Please see the Instructions for Use (IFU) for more information on patient/product selection and surgical procedures involving tissue implantation before using ALLODERM SELECT™ RTM.

ADVERSE EVENTS

Potential adverse events which may result from surgical procedures associated with the implant of a tissue graft include, but are not limited to, the following: wound or systemic infection; seroma; dehiscence; hypersensitive, allergic or other immune response; and sloughing or failure of the graft.

ALLODERM SELECT™ RTM is available by prescription only.

For more information, please see the Instructions for Use (IFU) for ALLODERM SELECT™ RTM available at <https://hcp.alloderm.com/> or call 1.800.678.1605.

To report an adverse reaction, please call Allergan Aesthetics at 1.800.433.8871.

References: 1. Xu H, Wan H, Sandor M, et al. Host response to human acellular dermal matrix transplantation in a primate model of abdominal wall repair. *Tissue Eng Part A*. 2008;14(12):2009-2019. 2. Harper JR, McQuillan DJ. Extracellular wound matrices: a novel regenerative tissue matrix (RTM) technology for connective tissue reconstruction. *Wounds*. 2007;19(6):163-168. 3. Data on file, Allergan; Study Report LRD-2010-04-005. 4. Data on file, Allergan; Study Report LRD-2012-05-006.

Allergan
Aesthetics
an AbbVie company

© 2025 AbbVie. All rights reserved. ALLODERM and its design are trademarks of LifeCell Corporation, an AbbVie company. US-PRM-00735 01/25



Many Make One

Houston – and Plastic Surgery – are defined not by a single story, but by many.

Innovation and tradition. Science and creativity. Exploration on a global scale and patient care delivered in some of the best medical centers in the world. From space discovery centered at NASA Johnson Space Center to groundbreaking clinical work and research at the world's largest medical center, the Texas Medical Center, Houston thrives because of its diversity of ideas, disciplines and people - each contributing to something greater than themselves.

It is also a city deeply connected to the history and future of plastic surgery. Houston was home to the first breast implant procedure, a milestone that helped shape modern aesthetic and reconstructive surgery and continues to influence innovation around the world today.

As the host city for PSTM for the first time, Houston offers more than world-class science and education. Attendees will experience the city's renowned culinary scene, vibrant international culture and the warmth of authentic Texas hospitality, creating the perfect setting for connection, collaboration and discovery.

Houston reflects the spirit of plastic surgery.

As plastic surgeons, we share the mindset of this vibrant city known as the energy capital of the world. We are constantly pushing boundaries, refining our techniques and redefining what exceptional patient care looks like. Plastic surgery is not one procedure, one practice model, or one way of thinking. It is reconstructive and aesthetic. It spans the full body and lifespan. It is practiced in academic centers, private practices, group models and solo settings. Our work is research-driven and artisan-refined, grounded in evidence and elevated by experience. Each approach is distinct – and each is essential.

Many paths. One extraordinary specialty.

What defines plastic surgery is not just the breadth of what we do, but the shared purpose that unites us.

We are witnessing extraordinary advancements across our field. From AI-assisted surgery to breakthroughs in regenerative medicine, nerve reconstruction, robotics, and personalized aesthetic treatments, innovation is reshaping how we care for our patients. These advancements are not just technical achievements; they reflect our enduring commitment to restoring function, improving quality of life and delivering meaningful, lasting outcomes.

Plastic Surgery The Meeting is where our collective strength is fully realized. In the four immersive days of our annual meeting, innovation changes practice application. PSTM is not simply a meeting – it is where our specialty comes together to learn and evolve as one.

PSTM By The Numbers:

- **Four Days of Comprehensive Programming** for your entire practice
- **Nearly 200 Live Sessions** and more than 1,200 abstracts across up to 13 concurrent session rooms
- **75 AMA PRA Category 1 Credits™** and **25 Patient Safety Credits** through live and on-demand education
- **Hands-on Educational Sessions** with expert faculty featuring the latest techniques and technologies
- An expansive **Exhibit Hall** showcasing products and services to support your practice
- Dynamic social events designed to foster meaningful **Networking** and collaboration

We invite you to join us in Houston Oct. 15-18. Bring your perspective, your voice and your vision for what plastic surgery can be. Because when many come together with purpose, they truly make one.

We look forward to welcoming you to Plastic Surgery The Meeting 2026.



C. Bob Basu, MD, MBA, MPH, FACS
President
American Society of Plastic Surgeons (ASPS)



Babak J. Mehrara, MD
President
The Plastic Surgery Foundation (The PSF)



Anand Kumar, MD
President
American Society of Maxillofacial Surgeons (ASMS)



Robert H. Gilman, MD, DMD
President
The Rhinoplasty Society (TRS)

International multidisciplinary expert panel reaches consensus for closed incision negative pressure therapy (ciNPT) with reticulated open cell foam (ROCF)

Use of ciNPT with reticulated open cell foam (ROCF) is recommended for:

- Incisions with a high risk of **seroma** formation
- Incisions with a high risk of compromised **perfusion**
- Cases in which **delayed incision healing** would postpone adjuvant therapy
- May be offered for effective use of incisions in which **scarring** is a concern



Learn more at go.solventum.com/cinpt-summary



Note: Specific indications, contraindications, warnings, precautions and safety information exist for these products and therapies. Please consult a clinician and product instructions for use prior to application. Rx only.

Reference: Singh D, Alton T, Alvand A, et. al. Linear and Area Coverage with Closed Incision Negative Pressure Therapy Management: International Multidisciplinary Consensus Recommendations. *International Wound Journal*, 2025; 22:e7067. <https://doi.org/10.1111/iwj.70677>.

Key Highlights of PSTM26

1 FROM MANY TO ONE *Together, we are powerful.*

Plastic Surgery The Meeting brings the full spectrum of our specialty into one place. From reconstructive to aesthetic, PSTM26 showcases global expertise, breakthrough techniques and real-world insights you can take straight to your practice. With multiple concurrent sessions over four days, the entire specialty is represented here, like at no other meeting.



2 PRE-SYMPOSIA *Deep dives. Hands-on learning.*

Kick off PSTM26 at hour one with focused, high-impact education on Thursday via pre-symposia on Hot Topics, Rhinoplasty and Migraine Surgery (in-person this year with an offsite cadaver lab). The hands-on learning opportunities continue throughout the conference, and include our *Inside the Incision* series of courses. In each of these sessions, an experienced plastic surgeon will guide participants step-by-step through a featured procedure, highlighting critical technical considerations, operative decision-making and strategies for optimizing patient outcomes.



3 TECHNOLOGY FORWARD *Innovation is changing practice.*

Experience fast-paced, TED-style talks on technology adoption, lectures from industry in the Innovation Theatres, plus the ASPS Inventors Challenge, where members pitch groundbreaking ideas to industry leaders. New technology is changing plastic surgery and the Hot Topics pre-symposium and clinical sessions throughout the meeting will spotlight the impact of the latest tools and devices.



4 HOUSTON EXPERIENCE *World-class dining. Unmatched energy.*

From iconic Tex-Mex to chef-driven cuisine, Houston delivers. Explore a vibrant food scene, renowned museums, Space Center Houston and dynamic nightlife – all just minutes from the meeting.



5 EXHIBIT HALL *Exhibitors power your practice.*

Explore the largest exhibit hall in the specialty – featuring cutting-edge devices, instrumentation and business solutions. From new product launches and in-booth demonstrations to lounges for networking and discovery, the PSTM Exhibit Hall has everything you need to elevate your practice – under one roof.



6 RECEPTIONS & NETWORKING *Connections that last.*

Celebrate at Opening Ceremonies on Friday night with the Patients of Courage Awards, then experience a true Texas-size Welcome Reception at the Armadillo Palace. From alumni gatherings to YPS and WPS events, meaningful connections happen here.



Location: Houston, TX, USA | **Meeting Site:** George R. Brown Convention Center
Headquarters Hotel: Hilton Americas-Houston

THURSDAY

7:30 a.m. - 12:30 p.m.

HOT TOPICS

7:30 a.m. - 12:30 p.m. | Rhinoplasty Symposium Co-hosted by ASPS and The Rhinoplasty Society

ASPS TRS
RHINOPLASTY SYMPOSIUM

8:00 a.m. - 3:30 p.m. | Senior Residents Conference

SRC

8:00 a.m. - 4:00 p.m. | Migraine Surgery Symposium and Cadaver Lab (Offsite venue)

1:30 - 6:00 p.m. | PSTM Educational Programming

6:00 - 6:30 p.m. | PSTM Launch! Reception (in Convention Center Foyer for all attendees)

7:00 - 8:00 p.m. | Special Interest Group Networking Receptions: Jewish Plastic Surgeons, Military, Plastic Surgeons of Chinese Descent, PRIDE



FRIDAY

7:00 a.m. | Close The Loop 5K Run/Walk

8:00 a.m. - 6:00 p.m. | PSTM Educational Programming

9:30 a.m. - 5:00 p.m. | Exhibit Hall Open

9:30 a.m. | Residents Bowl 2026 begins!

PROGRAM SPOTLIGHT:

10:30 a.m. - 12:30 p.m. | Flap-Off: The Reconstruction Bowl - What would you do when the Going Gets Tough?

12:30 - 2:00 p.m. | YPS Luncheon

2:00 - 3:00 p.m. | ASPS President's Panel



C. Bob Basu, MD
Annual presidential event focusing on a key aspect in plastic surgery.

3:00 - 3:30 p.m. | Trustees Talk



Donald Mackay, MD, DDS
Question Everything - The Key To Our Future

4:00 - 5:00 p.m. | ASPS Inventors Challenge

PROGRAM SPOTLIGHT:

5:00 - 6:00 p.m. | Achieving Functional Abdominal Wall Reconstruction

6:00 - 7:30 p.m. | Opening Ceremonies

7:30 - 9:00 p.m. | Welcome Reception at Armadillo Palace



REGISTER ONLINE

PlasticSurgeryTheMeeting.com

SATURDAY

7:00 - 8:00 a.m. | WPS & Wellness Morning Reset Yoga

8:00 a.m. - 6:00 p.m. | PSTM Educational Programming

9:30 a.m. - 5:00 p.m. | Exhibit Hall Open

PROGRAM SPOTLIGHT:

10:30 a.m. - 12:30 | TRS Presents Key Topics in Rhinoplasty

ASPS teams up with the Rhinoplasty Society on this annual session covering the latest in rhinoplasty techniques and advances.

10:30 a.m. - 12:30 p.m. | SHARE Panel: From Missions to Systems: Sustainable Reconstruction

11:30 a.m. - 12:30 p.m. | ASMS Converse Lecture

12:30 - 2:00 p.m. | WPS Luncheon

12:30 - 2:00 p.m. | ASMS Business Meeting

1:00 - 2:00 p.m. | SHARE Reception

2:00 - 3:00 p.m. | PSF President's Panel



Babak J. Mehrara, MD
Research in Plastic Surgery Residency Selection: Rigorous Requirement or Empty Credential?

3:00 - 3:30 p.m. | Noordhoff Humanitarian Award Lecture



Lun-Jou Lo, MD
Restoring More Than Smiles: Excellence in Cleft Care for the Community.

3:30 - 5:00 p.m. | ASPS/PSF Annual Business Meeting

5:00 - 6:00 p.m. | TIDE Talks

7:00 - 8:00 p.m. | Special Interest Group Networking Receptions: YPS, WPS, Residents

9:00 - 11:00 p.m. | The PSF and International Reception

SUNDAY

8:00 a.m. - 3:30 p.m. | PSTM Educational Programming

9:30 a.m. - 1:30 p.m. | Exhibit Hall Open

9:30 - 10:30 a.m. | Residents Bowl Semi-Finals & Finals

10:30 - 11:00 a.m. | Maliniac Lecture



Phillip N. Blondeel, MD, PhD
A Generation to Transform: Shrinking Donor Sites to Stem Cell Scale

PROGRAM SPOTLIGHT:

2:00 - 3:30 p.m. | Inside the Incision: Aesthetic Body-Rib Contouring



All times are in local Houston time (CT), unless otherwise noted.



MIGRAINE SURGERY Symposium



NEW: Hands-On Cadaver Lab

Thursday, Oct. 15 | 8 a.m. - 4:00 p.m.

PROGRAM CHAIRS:
Bardia Amirilak, MD; Robert Hagan, MD

ASPS and the Migraine Surgery Society are excited to offer *Migraine and Headache Surgery: The Evolution of Diagnosis and Surgical Treatment*.

This year the Migraine Symposium moves from virtual delivery to an **in-person course featuring a cadaver lab**.

This full-day (and beyond) educational course provides a comprehensive overview of understanding migraine and headache disorders, diagnosing headache types that respond to surgery, and surgical treatment options of these migraine and headache disorders. This includes integrating current evidence, patient selection strategies, and detailed anatomical considerations.

Faculty will review diagnostic criteria, identification of migraine trigger sites and contemporary operative approaches used in peripheral nerve-targeted migraine/headache surgery.

Registration fee includes:

- Full day program of lectures and cadaver lab work
- Access to pre-coursework modules via ASPS EdNet
- Breakfast and Lunch
- Round Trip Transportation to/from the George R. Brown Convention Center to the surgical center training venue

This activity has been approved for **AMA PRA Category 1 Credit™**. See page 24 for full accreditation information.



HOT TOPICS

Thursday, Oct. 15 | 7:30 a.m. - 12:30 p.m.

Learn the latest cutting-edge research and applied technology: Join us at the George R. Brown Convention Center prior to the formal start of PSTM26 programming, as experts discuss innovations in an array of topics, including:

- Body Contouring
- Regenerative Medicine
- Injectables
- AI & Robotics
- Breast
- Ultrasound & more!

Learning Objectives

Upon completion of this activity, participants should be able to:

- Identify emerging advances in plastic surgery affecting the diagnosis and delivery of treatment and assess potential applications.
- Translate expanded knowledge into practice to improve patient outcomes and satisfaction.

Registration fee includes:

- * Full day program of interactive lectures
- * Breakfast

Hot Topics is not accredited for CME.



ASPS TRS RHINOPLASTY SYMPOSIUM



Thursday, Oct. 15 | 7:30 a.m. - 12:30 p.m.

PROGRAM CHAIRS:
Stephen B. Baker, MD
Derek Steinbacher, MD, DMD

Take a deep dive into one of the cornerstones of plastic surgery as ASPS teams up with The Rhinoplasty Society to offer this popular half-day program.

This year's *Rhinoplasty Symposium* will focus on a hybrid approach to rhinoplasty utilizing precision and preservation techniques with an emphasis on optimizing patient outcomes. Learn how to manage and prevent complications and walk away with key rhinoplasty pearls – and pitfalls to avoid.

Registration fee includes:

- Half-day program of interactive lectures
- Breakfast

This activity has been approved for **AMA PRA Category 1 Credit™**. See page 24 for full accreditation information.

EARLY BIRD PRICES VALID UNTIL AUG. 6, 2026

Migraine Symposium PRICING AND INFO:

RESIDENTS	\$995
ASPS/MSS MEMBERS	\$1,275
NON-MEMBERS	\$1,475

Rhinoplasty Symposium PRICING AND INFO:

RESIDENTS	\$175
ASPS/TRS MEMBERS	\$295
NON-MEMBERS	\$425

Hot Topics PRICING AND INFO:

ASPS MEMBERS	\$295
NON-MEMBERS	\$425



Visit the symposia pages in the Programming Section of [PlasticSurgeryTheMeeting.com](https://www.PlasticSurgeryTheMeeting.com) for more information.



WPS Lounge

Relax and connect with colleagues at Plastic Surgery The Meeting in the WPS Lounge, which will be open in the George R. Brown Convention Center during Exhibit Hall hours.

The WPS Lounge is supported by CareCredit



WPS & Wellness Morning Reset Yoga

Start your day the healthy way—with a relaxing session of Yoga brought to you by the Women Plastic Surgeons Forum and the Wellness Committee. Connect with colleagues and focus on you before you hit the convention floor.

7:00 - 8:00 a.m. | Saturday, Oct. 17

Hilton Americas-Houston

\$25 registration fee for all



WPS Luncheon

The WPS Luncheon is back for 2026! Join the Women Plastic Surgeons Forum for an engaging luncheon at the Hilton Americas-Houston. This will be a unique opportunity to network with your colleagues.

12:30 - 2:00 p.m. | Saturday, Oct. 17

Hilton Americas-Houston

\$90 for Residents / Medical Students

\$115 for all member categories

\$150 for guest physicians and late registration



WPS Reception

Engage with friends, make new connections and network with other female plastic surgeons from around the globe.

7:00 - 8:00 p.m. | Saturday, Oct. 17

Hilton Americas-Houston



JPS, Military, PRIDE, PSCD Receptions



Don't miss our special interest group receptions for the ASPS Jewish Plastic Surgeons Forum, Military Forum, Plastic Surgeons of Chinese Descent, and PRIDE!

Celebrate and connect for a fun and engaging evening of inclusivity and support.

7:00 - 8:00 p.m. | Thursday, Oct. 15

Hilton Americas-Houston



YPS Lounge

Relax and connect with colleagues at Plastic Surgery The Meeting in the Young Plastic Surgeons Lounge, which will be open in the George R. Brown Convention Center during Exhibit Hall hours.

YPS Luncheon

\$90 for Residents / Medical Students

\$115 for all member categories

\$150 for guest physicians and late registration

12:30 - 2:00 p.m. | Friday, Oct. 16

Hilton Americas-Houston

Supported by Motiva by Establishment Labs

YPS Networking Reception

Network with other young plastic surgeons, engage with friends and make new connections.

7:00 - 8:00 p.m. | Saturday, Oct. 17

Hilton Americas-Houston





MemoryGel BOOST™ Breast Implants

A unique balance
of **softness**
and **form stability***1-2

*Head-to-head form stability benchtop testing vs. MENTOR® MemoryGel® Xtra and MemoryGel® Breast Implants.

1. Test Report 100939310 MemoryGel BOOST Form Stability Glue Method Study Results.
2. 100733860 Mentor R&D Lateral Compression Benchtop Testing- October 2024

The sale and distribution of Mentor Breast Implant Devices are restricted to users and/or user facilities that provide information to patients about the risks and benefits of the device prior to its use in the form and manner specified in approved labeling to be provided by Mentor Worldwide LLC.

Important information: Prior to use, refer to the instructions for use supplied with this device for indications, contraindications, side effects, warnings and precautions. Caution: US law restricts this device to sale by or on the order of a physician.

Important Safety Information

MENTOR™ MemoryGel™ Breast Implants (excluding MemoryGel Enhance), MemoryShape™ Breast Implants, and Saline-filled Breast Implants are indicated for breast augmentation – in women who are at least 22 years old for MemoryGel™ Implants and MemoryShape™ Implants, and at least 18 years old for Saline Breast Implants – or for breast reconstruction (including MemoryGel Enhance). Breast Implant surgery should not be performed in women with active infection anywhere in their body, with existing cancer or pre-cancer of their breast who have not received adequate treatment for those conditions, or who are currently pregnant or nursing.

The most common complications with MemoryGel™ Implants, MemoryShape™ Implants, and Saline-filled Breast Implants include reoperation, capsular contracture, asymmetry, breast pain, implant removal, wrinkling, ptosis, and implant rupture and deflation. Breast implants are also associated with the risk of breast implant-associated anaplastic large cell lymphoma (BIA-ALCL), an uncommon type of lymphoma. An individual's risk of developing BIA-ALCL with MENTOR™ Breast Implants is low based on the incidence of worldwide cases. Detailed information regarding the risks and benefits associated with MemoryGel™ Implants, MemoryShape™ Implants, and Saline-filled Breast Implants is provided in patient brochures available from your surgeon or on line at www.mentorwwllc.com.

© Johnson & Johnson and its affiliates 2026. US_MNT_BRST_414349

WARNING

- Breast implants are not considered lifetime devices. The longer people have them, the greater the chances are that they will develop complications, some of which will require more surgery.
- Breast implants have been associated with the development of a cancer of the immune system called breast implant-associated anaplastic large cell lymphoma (BIA-ALCL). This cancer occurs more commonly in patients with textured breast implants than smooth implants, although rates are not well defined. Some patients have died from BIA-ALCL.
- Patients receiving breast implants have reported a variety of systemic symptoms such as joint pain, muscle aches, confusion, chronic fatigue, autoimmune diseases and others. Individual patient risk for developing these symptoms has not been well established. Some patients report complete resolution of symptoms when the implants are removed without replacement.



Close The Loop 5K Run/Walk Registration is Open!

Profits generated by the Close The Loop 5K will be awarded to organizations focused on awareness and assistance efforts of those fighting breast cancer or pursuing breast reconstruction surgery.

We believe every person impacted by breast cancer should have access to their choice of breast reconstruction options. Get your running shoes ready and help us make a difference in patient care.

Register Early To Receive Discounted Rates!

Each participant will receive a race packet that will include a t-shirt and a participation medal.

REGISTER NOW:
RunSignUp.com/BRA5K



Join us to support breast reconstruction awareness and research!

FlexHD®

A SURGEONS CHOICE IN ACELLULAR DERMAL MATRICES

Now with expanded options.

LARGER SIZES
NOW AVAILABLE

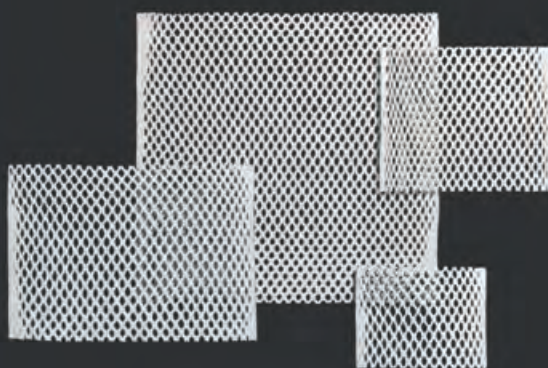
FlexHD®
PLIABLE SHAPED



FlexHD
PLIABLE PRE.



NEW



FlexHD

MESHED

Change the Reconstructive Pathway

Senior Residents Conference

SRC

ASPS PLASTIC SURGERY
SENIOR RESIDENTS
CONFERENCE



Thursday, Oct. 15

8:00 a.m. - 3:30 p.m.
Convention Center

CO-CHAIRS:
Katie Egan, MD
Brett Phillips, MD, MBA
Bryan J. Pyfer, MD, MBA

The Essential Life-After-Residency Event

Learn about the financial, legal and ethical issues of establishing and running a practice.

Presentations that you need to see:

- ABPS Message to Future Plastic Surgeons
- Written & Oral Board Collection Practical Tips
- Contracts and Financial Advice for Your First Years Out of Residency

Learn from experienced faculty on these vital topics:

- Pearls and Pitfalls for the First 5 Years
- Inside the Hiring Room
- Tips on Social Media and Networking

Your Registration Fee includes:

- Exclusive admittance to all meals and educational sessions focused on Senior Residents scheduled on Thursday, Oct. 15.
- Access to the Resident Networking/Mentorship Reception on Saturday, Oct. 17, is also included.

(\$375 RFF / \$475 non-RFF members)

Rates increase after Aug. 6. Register now for Early Bird Savings!

What's New This Year?

- Effective techniques, advice, and resources to help you select the right employment model for you
- Strategies for successful networking during your job search and throughout your career
- Tips to achieve work/life balance

Resident Networking/Mentorship Reception

7:00 - 8:00 p.m. | Saturday, Oct. 17

Location: Hilton Americas-Houston

In cooperation with:



RESIDENTS BOWL

2026

Don't miss this year's **Residents Bowl** occurring Friday - Sunday in the Exhibit Hall, with the championship match scheduled on Sunday at 9:30 a.m.

Houston makes it easy to maximize free time around the meeting. The George R. Brown Convention Center (GRB) sits beside the urban oasis parkland of Discovery Green and close to downtown dining, Daikin ballpark and nightlife, so attendees can stay local after sessions or venture farther out for museums, skyline parks, shopping and NASA.

HOUSTON



Signature Houston: Worth the Drive

Heights Neighborhood – 4.9 miles

Stroll down 19th Street for antique shopping and local boutiques.

The Galleria – 8.6 miles

Houston's marquee shopping destination, combining luxury retail, dining and an indoor ice rink.

Space Center Houston – 25.2 miles

The official visitor center of NASA Johnson Space Center and one of the quintessential "only in Houston" experiences for attendees extending their stay or traveling with family.



A Short Ride Away

POST Houston / POST Market – 1.3 miles

A former post office turned downtown destination with a food hall, retail, events and the Skylawn rooftop park. This is a strong "one-stop" pick for food, skyline photos and contemporary Houston energy.

Houston Theater District – 1.3 miles

Nine world-class performing arts organizations live here. The curtain rises on the Alley Theatre, Jones Hall, Wortham Theater Center, the Hobby Center for the Performing Arts and the 713 Music Hall at POST Houston.

Buffalo Bayou Park – 2.4 miles

A 2.3 mile long municipal park located along the banks of the Buffalo Bayou near Downtown Houston. A great choice for skyline views, a scenic walk or a reset after a long day indoors.

The Menil Collection – 3.6 miles

A free art museum with a calmer, more design-forward feel than the bigger museum campus. Great for attendees who want culture without a full-day commitment.

Museum District – 3.7 miles

The Museum of Fine Arts, Houston Museum of Natural Science (includes Cockrell Butterfly Center) and the Houston Zoo anchor one of the city's best visitor zones, and Hermann Park rounds it out with green space for a half-day outing.



Walkable Spaces and Dining Near Convention Center

Discovery Green – directly across from GRB

A 12-acre downtown park right beside the convention center with public art, lawns, a lake and on-site dining. It is the best quick-reset option between sessions.

Grotto Downtown

Italian restaurant connected to Avenida Houston, convenient for business meals, group dinners and pre-event cocktails.

The Grove

Modern American in Discovery Green with park views, ideal when attendees want something elevated without leaving the meeting footprint.

Xochi

Upscale Oaxacan at the Marriott Marquis and one of the strongest dining picks in the immediate convention area. Excellent for business dinners or a polished night out.

Osso & Kristalla

Modern Italian near Daikin Park that works well for small groups and post-session dinners.

House of Blues Houston

A walkable downtown choice for live music, drinks and dinner in one stop.

Daikin Park

Home of the Astros and an easy add-on for attendees who want stadium atmosphere or dinner in the ballpark district.



Preservé®

An advanced, less invasive* breast enhancement technique made possible by patented technologies and designed to preserve the patient's native breast tissue functionality, including nipple sensation and chest muscles.^{1,2}

Daniela
Motiva Ergonomix™
Full, 235cc

Preservé® Her...



Breast anatomy

Preservé® is an innovative, less invasive* breast augmentation surgery, preserving the patient's native breast tissues and sensation over time.^{1,2}



Breast stability

Preservé® is designed to avoid disruption to the pectoralis major muscle and minimizes the damage to the natural breast structures.



Breast softness

The Motiva SmoothSilk Ergonomix® implant, a perfect choice for the Preservé® procedure, offers benefits to patients including smaller incisions³, soft breast⁴ and low device related complications.⁵



Peace of mind

Preservé® offers peace of mind to you and your patients through a less invasive breast augmentation technique* designed to reduce tissue damage.

To learn more and connect with a Motiva® representative visit MotivaUSA.com/contact

REFERENCES

1. Chacon-Quiros M, Sforza M, Solis-Chaves P, et al. The 3-year results of a 100-patient prospective study of safety and effectiveness of Mia Femtech. *Aesthet Surg J*. 2025;sjaf196. doi:10.1093/asj/sjaf196 2. Establishment Labs. CLIN-001037: Motiva® Breast Tissue Preservation® Techniques. Data on file. 3. Zeplin PH. Narbensparende Brustvergrößerung: Erfahrungen mit über 500 Implantaten. *Handchirurgie · Mikrochirurgie · Plastische Chirurgie*. 2021;53(02):144-148. doi:10.1055/a-1307-3917 4. Doloff J, Veiseh O, de Mezerville R, et al. The surface topography of silicone breast implants mediates the foreign body response in mice, rabbits, and humans. *Nat Biomed Eng*. 2021. doi:10.1038/s41551-021-00739-4 5. Glucksman C, Wolfe A, McGuire P. The Study of the Safety and Effectiveness of Motiva SmoothSilk Silicone Gel-filled Breast Implants in Patients Undergoing Primary and Revisional Breast Augmentation: 5-Year Clinical Data. *Aesthet Surg J*. 2025 Nov 20;sjaf245. doi: 10.1093/asj/sjaf245. Epub ahead of print. PMID: 41266083.

IMPORTANT SAFETY INFORMATION

The Motiva SmoothSilk® Round and SmoothSilk Ergonomix® Silicone Gel Breast Implants are indicated for breast augmentation for women of at least 22 years old. Breast augmentation includes primary breast surgery to increase the breast size, as well as revision surgery to correct or improve the result of an original primary breast augmentation surgery (i.e., revision-augmentation). Breast Implant surgery is contraindicated in women with active infection anywhere in their bodies, with existing cancer or pre-cancer of their breast who have not received sufficient treatment for those conditions, or who are currently pregnant or nursing. Adequate studies have not been performed to confirm the safety of breast implant surgery in women with these conditions or under these circumstances; therefore, if you have any of the conditions or circumstances listed above, breast augmentation surgery with implants should not be performed at this time. Failure to take into consideration these contraindications may increase the risks involved with breast implant surgery and have the potential to cause harm. Patients should be advised that key complications have historically been associated with silicone gel breast surgery and implantation of silicone gel breast implants including, but not limited to, capsular contracture, implant removal, reoperation, infection, and rupture. Further, breast implants are not lifetime devices and patients should visit their healthcare professional, as recommended. For more detailed information about the benefits and risks of Motiva SmoothSilk® Round and SmoothSilk Ergonomix® Silicone Gel Breast Implants, please visit: www.motivausa.com or call Motiva at 1-800-924-5072.

The sale and distribution of this device are restricted to users and/or user facilities that provide information to patients about the risks and benefits of this device in the form and manner specified in the approved labeling provided by Motiva USA.

Motiva manufactures the Preservé® system to support surgeons conducting a less invasive procedure for breast augmentation. Please consult your surgeon to determine if the procedure described in this brochure is right for you. Techniques and treatment may vary based on patient circumstances and will be determined by your surgeon.

Preservé® clinical outcome data is currently based on the use of the Motiva® Channel Separator and the Motiva® Inflatable Balloon with Motiva® Ergonomix2 Breast Implants in minimally invasive procedures in Motiva's markets outside of the United States. The Motiva® Inflatable Balloon and Motiva® Channel Separator, used in the Preservé® System, are registered and listed with the FDA and may be used with FDA approved Implants such as the FDA approved Motiva SmoothSilk® implant.

*As compared to traditional breast augmentation procedures



Motiva®, Establishment Labs®, Motiva Implants®, Preservé®, SmoothSilk® and Ergonomix® are trademarks of Establishment Labs Holding, Inc. All other trademarks are the property of their respective owners. © 2026 Establishment Labs Holdings Inc. All rights reserved. US-Pres-0013

Exhibit Hall



The PSTM26 Exhibit Hall will be open Friday, Oct. 16, through Sunday, Oct. 18, in the George R. Brown Convention Center. This year we look to bring some of the world's most innovative and essential plastic surgery-related exhibitors to showcase their products and services and to take your practice to the next level. We have designed an incredible exhibit experience that will allow you to find everything you are looking for in one place.

Visit PlasticSurgeryTheMeeting.com/Exhibit-Hall to see our growing list of exhibitors!

Hours:

Friday, Oct. 16
9:30 a.m. - 5:00 p.m.

Saturday, Oct. 17
9:30 a.m. - 5:00 p.m.

Sunday, Oct. 18
9:30 a.m. - 1:30 p.m.



Exhibit Hall

Don't miss these key ASPS attractions when you visit the hall:

ASPS Resource Center

Visit ASPS representatives from Member Services, Membership, ASPS EdNet, Practice Management Products, PRS, PSN, Registries, Quality, Health Policy and more at the ASPS Resource Center.

Stop by and take advantage of onsite promotions and get answers to your questions on Membership, CME reporting and all things ASPS.



Customize Your Bag Station

Don't miss the return of customized exhibit hall bags along with other interactive elements inspired by Houston planned throughout the meeting.

Residents Bowl Arena

Don't miss the highly competitive Residents Bowl taking place Friday - Sunday in the Exhibit Hall. Will reigning champs Baylor College of Medicine triumph again?

Stop by the arena each day to see who will bring home the coveted trophy this year!



ASPS EdNet

ASPS EdNet Digital Learning is better than ever since its 2025 redesign! Stop by the booth in the Resource Center and embark on a journey through digital education with Podcasts, SNIPS, PRS Journal Articles with CME, and the enhanced ASPS EdNet platform.

- CME learning opportunities that fit your schedule
- New segmented learning paths in the Resident Education Center (REC)
- Self-assessment opportunities like the In-Service Exam (ISE), Aesthetic Life-Long Learning Exam (L3E), and Comprehensive Self-Assessment Test (CSAT)

Don't miss out! Visit us and experience the future of digital education with ASPS EdNet at ednet.plasticsurgery.org

Innovation Theatres

This year, we will have not one, but TWO Innovation Theatres in the Exhibit Hall! Premier supporters and exhibitors will be presenting 45-minute talks all weekend about their products and services.

Visit the theatres to learn how their innovations can enhance your practice.



PSTM26 Exhibit Hall Admission requirements can be found on the PSTM website Exhibit Hall page.

Visit PlasticSurgeryTheMeeting.com/Exhibit-Hall

Plastic Surgery The Meeting is pleased to offer meeting attendees discounted hotel and transportation rates for travel to and from Houston. Take advantage of the discounts offered and make reservations early, as availability is on a first-come, first-served basis.

Book your hotel through our Housing Partner, EventSphere. AVOID THE SCAMS!

Meeting attendees and exhibitors are often contacted by companies claiming they represent ASPS and offering assistance with hotel reservations for Plastic Surgery The Meeting. Hotel reservations should only be made directly with EventSphere. To ensure your private information is secured and protected, do not provide your credit card information to anyone other than EventSphere for PSTM26. Look for the official logo prior to making reservations.



Headquarters Hotel

Hilton Americas-Houston, located at 1600 Lamar Street, is the headquarters (HQ) hotel for Plastic Surgery The Meeting.



Deposit / Confirmation

Neither ASPS nor EventSphere require a deposit. However, hotels may charge your credit card a two-night room and tax deposit in advance to secure discounted rates and reservation.

Confirmations are sent via email at the time of reservation; please review for accuracy once received. If the confirmation email is not received within 24 hours of making your reservations, please contact EventSphere.

Changes/Cancellations/Requests

All changes and cancellations must be made directly with EventSphere and up to seven (7) business days prior to scheduled arrival. An acknowledgment of your request will be emailed within 24 business hours of receipt. You will be asked to provide room preferences when making your reservation. Hotels will assign specific room types upon check-in based on availability.

Air Travel

The George Bush Houston Intercontinental Airport (IAH) is located just 23 miles north of downtown Houston. IAH, has 27 passenger airlines offering nonstop service to more than 184 destinations.

William P. Hobby Airport (HOU) is located 7 miles south of downtown Houston. HOU offers nonstop flights to 81 destinations with 7 passenger airlines.

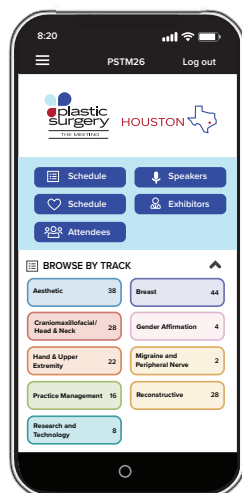
United Airlines is offering a discount code for PSTM26 travelers. Book through their site and use offer code **ZRBG731679**.

Hotel Shuttle Bus / Taxi

ASPS is providing complimentary hotel shuttle bus service to some hotels. Taxi services are available at the George R. Brown Convention Center.

Official Hotels	Distance	Shuttle Bus
Hilton Americas-Houston 1600 Lamar St Headquarters Hotel	0.1 miles	Walking
Marriott Marquis Houston 1777 Walker St.	0.1 miles	Walking
Embassy Suites by Hilton Houston Downtown 1515 Dallas St.	0.1 miles	Walking
Cambria Hotel Houston Downtown/ Convention Center 1314 Texas Ave.	0.7 miles	Shuttle Bus
Courtyard by Marriott Houston Downtown/ Convention Center 916 Dallas St.	0.9 miles	Shuttle Bus
Four Seasons Hotel Houston 1300 Lamar St.	0.3 miles	Walking
Hampton Inn by Hilton Downtown 710 Crawford St.	0.2 miles	Walking
Homewood Suites by Hilton Houston Downtown 710 Crawford St.	0.2 miles	Walking
JW Marriott Houston Downtown 1806 Main St.	0.5 miles	Shuttle Bus
Le Meridien Houston Downtown 1121 Walker St.	0.4 miles	Walking
Residence Inn Houston Downtown 904 Dallas St.	0.6 miles	Shuttle Bus
SpringHill Suites Houston Downtown 914 Dallas St.	0.6 miles	Shuttle Bus

New PSTM Mobile App Coming in 2026 Put PSTM in the Palm of Your Hand



We are redesigning the **PSTM mobile app** to be better than ever for Houston. Watch the App page on PlasticSurgeryTheMeeting.com for information on when it will be ready to download this Fall. The app is the best way to:

- Search and filter to find sessions, speakers and exhibitors
- Manage your schedule for the meeting
- Complete CME evaluations
- View the Exhibit Hall Map
- Receive show updates and special announcements during PSTM... and so much MORE!

The App will be available before the meeting from the [iTunes App Store](https://www.apple.com/app-store/) or [Google Play](https://play.google.com/store/apps/details?id=com.plasticsurgerytheevent) to make the most of #PSTM26.



The deadline for reserving hotels is **Sept. 18, 2026**.

Scan code for more information on hotels & reservations.



Shape the future of tissue regeneration

GORE® ENFORM

Biomaterials with GORE 3D Bioabsorbable Technology

Vascularization as early as

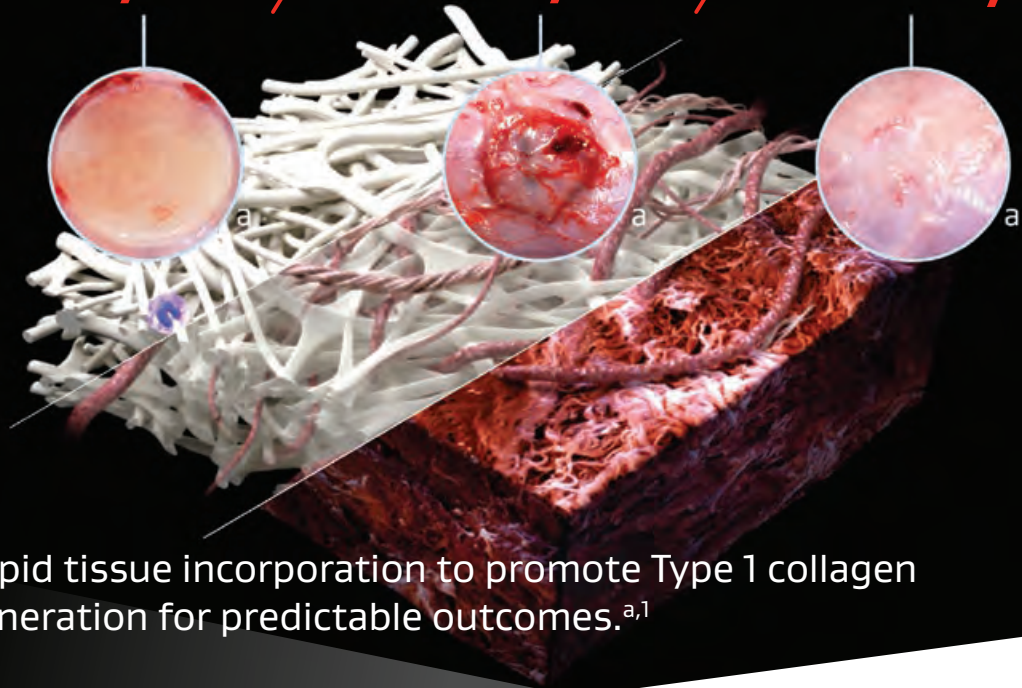
7 days^a

Integrated completely with native tissue in

30 days^a

Complete absorption and replaced with native tissue in

180 days^a



Rapid tissue incorporation to promote Type 1 collagen generation for predictable outcomes.^{a,1}



Together, improving life

GORE 3D Bioabsorbable Technology

^a Data on file, W. L. Gore & Associates, Inc; Flagstaff, AZ.

¹ Zemlyak A, Colavita P, Tsirlina V, et al. Absorbable glycolic acid/trimethylene carbonate synthetic mesh demonstrates superior in-growth and collagen deposition. Presented at the 4th Annual European Plastic Surgery Research Council (EPSRC) Meeting; August 23-26, 2012; Hamburg, Germany. *Plastic & Reconstructive Surgery* 2012;130(Supplement 25):493. Abstract LOP59

Consult Instructions for Use at eifu.goremedical.com for a complete description of all applicable indications, warnings, precautions and contraindications for the markets where this product is available. Only

Products listed may not be available in all markets.

© 2025 W. L. Gore & Associates, Inc. All rights reserved. All trademarks referenced are trademarks of either a member of the Gore group of affiliated companies or their respective owners. "Together, improving life" mark and design are trademarks of a Gore company. 26551033-EN01 APRIL 2026

International Highlights of PSTM26



Global Partner Societies

The American Society of Plastic Surgeons is thrilled to extend a heartfelt welcome to our esteemed Global Partners, representing 55 nations, as honored guests at Plastic Surgery The Meeting in Houston.

Each national plastic surgery society with which ASPS has signed a Memorandum of Understanding (MOU) has demonstrated a shared commitment to excellence in standards, governance and ethics. Through this spirit of mutual recognition, members of each national society are eligible to join ASPS as International Members, fostering greater collaboration and connection within the global plastic surgery community.

Albania	Ecuador	Mexico	Singapore
Argentina	Egypt	Netherlands	South Africa
Australia	Finland	New Zealand	South Korea
Austria	France	Nigeria	Spain
Belgium	Germany	Norway	Switzerland
Bolivia	Guatemala	Oman	Taiwan
Brazil	India	Pakistan	Thailand
Chile	Indonesia	Panama	Turkey
Colombia	Ireland	Peru	United Arab Emirates
Costa Rica	Israel	Philippines	United Kingdom
Croatia	Italy	Poland	Venezuela
Cyprus	Japan	Portugal	
Denmark	Jordan	Romania	
Dominican Republic	Kuwait	Russia	
	Malaysia	Saudi Arabia	

International Women Plastic Surgeons



The IWPS Forum champions the voices, interests, and advancement of female plastic surgeons around the world. IWPS members are encouraged to attend the WPS events on Saturday, Oct. 17, including the WPS & Wellness Morning Reset Yoga at 7:00 a.m., the WPS Luncheon at 12:30 p.m. and the WPS Reception at 7:00 p.m. (Make sure to add these to your PSTM registration!)

International Residents Forum



The IRF offers international plastic surgery residents a unique platform to engage with ASPS initiatives, contribute to global projects and connect with peers and mentors across borders. IRF members are invited to attend the Resident Networking & Mentorship Reception on Saturday, Oct. 17 at 7:00 p.m., where they will have the opportunity to build meaningful connections within the ASPS community.

International Young Plastic Surgeons



The IYPS Forum fosters global collaboration and connection among the next generation of plastic surgery leaders. All IYPS members are invited to join the YPS Reception on Saturday, Oct. 17 at 7:00 p.m.

International Center



All international attendees are invited to use the ASPS International Center as their meeting and information point. The Center will be in the George R. Brown Convention Center, outside the Exhibit Hall, from Thursday to Saturday (9:30 a.m. - 5 p.m.) and Sunday (9:30 a.m. - 1:30 p.m.).

Please contact Ms. Romina Valadez if you have any questions regarding International Membership at rvaladez@plasticsurgery.org.



Intended Audience

Plastic Surgery The Meeting 2026 is intended for plastic surgeons, residents and paramedical professionals interested in translating expanded knowledge into practice for the improvement of patient outcomes in plastic and reconstructive surgery.

Learning Objectives

At the conclusion of this activity, participants will be able to:

- Identify current and emerging issues and advances affecting the diagnosis and delivery of treatment for plastic surgical problems and assess their potential practice applications.
- Incorporate into practice technical knowledge in state-of-the-art procedures and drug and medical device uses.
- Communicate current practice management and regulatory issues necessary for the efficient and safe delivery of patient care.
- Translate expanded knowledge into practice for the improvement of patient outcomes and satisfaction.

Accreditation Statement

The American Society of Plastic Surgeons® (ASPS®) is accredited by the Accreditation Council for Continuing Medical Education (ACCME) to provide continuing medical education for physicians.

Designation Statement

The American Society of Plastic Surgeons designates this other activity for a maximum of **75.0 AMA PRA Category 1 Credit(s)™**. Physicians should claim only the credit commensurate with the extent of their participation in the activity.

Of the **75.0** credits, **25** credits have been identified as applicable to patient safety.

Disclosure Policy

The American Society of Plastic Surgeons (ASPS) requires all instructors, planners, reviewers, managers, staff and other individuals in a position to control or influence the content of an activity to disclose all relevant financial relationships or affiliations. All identified conflicts of interest must be resolved and the educational content thoroughly vetted by ASPS for fair balance, scientific objectivity, and appropriateness of patient care recommendations. ASPS also requires faculty/authors to disclose when off-label/unapproved uses of product are discussed in a CME activity or included in related materials.

Disclaimer: All relevant financial relationships for planners, faculty, and others in control of content (either individually or as a group) are reviewed by the ASPS Continuing Education Committee and have been appropriately mitigated.

Additional Programs

Migraine Surgery Symposium CME Information

Accreditation

This activity has been planned and implemented in accordance with the accreditation requirements and policies of the Accreditation Council for Continuing Medical Education (ACCME) through the joint providership of the American Society of Plastic Surgeons (ASPS) and the Migraine Surgery Society (MSS). The American Society of Plastic Surgeons (ASPS) is accredited by the ACCME to provide continuing medical education for physicians.

Designation

This activity has been approved for **AMA PRA Category 1 Credits™**.

Rhinoplasty Symposium CME Information

Accreditation

This activity has been planned and implemented in accordance with the accreditation requirements and policies of the Accreditation Council for Continuing Medical Education (ACCME) through the joint providership of the American Society of Plastic Surgeons (ASPS) and The Rhinoplasty Society (TRS). The American Society of Plastic Surgeons (ASPS) is accredited by the ACCME to provide continuing medical education for physicians.

Designation

This activity has been approved for **AMA PRA Category 1 Credits™**.

Physician, Physician Assistant, Nurse Practitioners – CME Credit Information

The American Society of Plastic Surgeons (ASPS) is accredited by the Accreditation Council for Continuing Medical Education (ACCME) to provide continuing medical education credit for all educational programs.

In 2024, ASPS received accreditation with commendation from ACCME, a designation awarded to organizations that demonstrate compliance in all criteria and accreditation policies. ACCME commended the Society for meeting all accreditation requirements, and for demonstrating that it is a learning organization and a change agent for physicians and the patients it serves. In addition, the Society demonstrates an engagement with its environment in support of physician learning and change that is a part of a system for quality improvement.

Disclaimer: ASPS is not responsible for providing recertification credentialing for the below certification(s). It shall be the responsibility of the individual to provide information to the appropriate corresponding recertification organization(s) for conversion of continuing medical education credit(s). All questions should be directed to the corresponding organization(s) as indicated below for the most current information on recertification.

PHYSICIAN CME

AMA PRA Category 1 Credit(s)™

The American Society of Plastic Surgeons (ASPS) is accredited by the Accreditation Council for Continuing Medical Education (ACCME) to provide continuing medical education credit for all educational programs.

NURSE PRACTITIONERS CREDIT

American Academy of Nurse Practitioners Certification Board (AANPCB): Contact Hours: AMA PRA Category 1 Credit(s)™

The AANPCB accepts **AMA PRA Category 1 Credit(s)™** towards recertification. **1 AMA PRA Category 1 Credit™** = 1 contact hour. For more information visit the FAQs on AANPCert.org or call (512) 637-0500.

American Nurses Credentialing Center (ANCC) Nurse Practitioner Certification: AMA PRA Category 1 Credit(s)™

The ANCC accepts **AMA PRA Category 1 Credit(s)™** towards recertification. **1 AMA PRA Category 1 Credit™** = 1 contact hour. For more information visit the ANCC FAQs on NursingWorld.org or call (800) 284-2378.

PHYSICIAN ASSISTANT CREDIT

National Commission on Certification of Physician Assistants (NCCPA): AMA PRA Category 1 Credit(s)™

National Commission on Certification of Physician Assistants (NCCPA): **AMA PRA Category 1 Credit(s)™**

The NCCPA accepts **AMA PRA Category 1 Credit(s)™** towards recertification. Visit the NCCPA website at nccpa.net for more information or call (678) 417-8100.



INTERNATIONAL MEMBER CME RECOGNITION AGREEMENTS

In support of global learning, the American Medical Association (AMA) has mutual recognition agreement of continuing medical education (CME) credit with:

European Union of Medical Specialists (UEMS)/ European Accreditation Council for Continuing Medical Education (EACCME)

Live events and e-learning activities from accredited providers from the United States, certified for **AMA PRA Category 1 Credits™**, are eligible for conversion of **AMA PRA Category 1 Credits™** into ECMECs.

Visit Edhub.AMA-ASSN.org or the UEMS.eu websites for more information. For all other countries, please check with your nation's credentialing organization.



REGISTER NOW

Plastic Surgery The Meeting values the continued contributions of our Premier Industry Supporters.

The following sponsors have signed Premier Supporter agreements for PSTM as of May 8.



SAPPHIRE

Allergan Aesthetics
an AbbVie company

At Allergan Aesthetics, an AbbVie company, we develop, manufacture, and market a portfolio of leading aesthetics brands and products. Our aesthetics portfolio includes facial injectables, body contouring, plastics, skin care, and more. With our own research and development function focused on driving innovation in aesthetics, we're committed to providing the most comprehensive science-based product offering available. For more information, visit www.AllerganAesthetics.com.

PLATINUM

solventum

The world needs you at your best. Solventum creates breakthrough solutions to help you save valuable time and restore patients' lives. Clinicians like you, and your patients, can experience the holistic benefits we help bring to treating wounds and preventing complications. With industry-leading products, education and support that spans the patient journey, Solventum enables you to lead the way in healthcare.

MENTOR

At Johnson & Johnson MedTech, we are redefining possibilities in breast aesthetics by delivering a comprehensive portfolio of science-based, evidence-backed solutions designed to help women enhance and restore their confidence and quality of life.

As the #1 global brand, we take pride in being a trusted partner in breast augmentation and reconstruction for both consumers and healthcare professionals. In everything we do, we use a patient-first approach that encourages choice and personal empowerment. For more than 40 years, MENTOR™ products have been developed with this very goal in mind. Available in 118 countries, MENTOR™ Breast Implants have been chosen by over 9 million women worldwide.



Premier Industry Supporters

GOLD



Vertex invests in scientific innovation to create transformative medicines for people with serious diseases. Through cutting-edge science across multiple modalities, it has approved medicines that treat the underlying causes of multiple diseases and conditions and has a broad and deep clinical pipeline. Learn more at www.vrtx.com.



The BD surgical portfolio, leadership and partnerships are focused on improving the standard of care in plastic and reconstructive surgery. BD offers solutions from hemostats to wound irrigation, and the GalaFLEX™ Scaffold with P4HB technology to provide soft tissue support in plastic surgery procedures.



MTF Biologics is a nonprofit tissue bank delivering high-quality, aseptically processed human allografts for plastic and reconstructive surgeons. Our dermal, adipose, placental matrices, and costal cartilage support complex soft tissue and structural reconstruction, providing integrity and reliable integration. Backed by clinical evidence, we enable durable, predictable outcomes across reconstructive procedures.



W. L. Gore & Associates is a global materials science company dedicated to transforming industries and improving lives. Since 1958, Gore has solved complex technical challenges in demanding environments — from outer space to the world's highest peaks to the inner workings of the human body. With more than 13,000 Associates and a strong, team-oriented culture, Gore generates annual revenues of \$4.8 billion.



Motiva® products are manufactured by Establishment Labs, a global medical technology company dedicated to improving women's health and wellness. The company's initial focus is breast health, principally breast aesthetics and reconstruction. The Motiva portfolio offers advanced and innovative solutions to breast surgery, designed to deliver improved aesthetic and clinical outcomes.



ASPS Inventors Challenge: Forging the Future of the Specialty at PSTM!

The **ASPS Inventors Challenge** returns to PSTM this year with a \$10,000 prize.

Join us at 4:00 p.m. on Friday, Oct. 16, as contestants pitch their innovative plastic surgery product ideas LIVE to a panel of business expert judges. The goal is to find and support new viable plastic surgery product/business ventures that will improve the practice of plastic surgery.

Contestants applied in April. This summer, the selected finalists will be:

- Assigned a “coach” from the TIDE committee to assist them through the process of preparing their presentation.
- Invited to pitch their innovation LIVE on Friday, Oct. 16, at PSTM26 in Houston.
- Assessed by a panel of judges with experience in plastic surgery innovation who will then select the Top Innovator of 2026.

Applicants are evaluated by members of the TIDE Committee. The top-scoring applicants are invited to participate in the live ASPS Inventors Challenge presentation at PSTM26. The final round winner will be awarded \$10,000 to continue developing their innovation.



TIDE TALKS

In addition to the groundbreaking innovations you'll see at The Inventors Challenge, we will also be presenting TIDE Talks on Saturday, Oct. 17, at 5:00 p.m.

Spearheaded by the ASPS Technology, Innovation, Disruption and Entrepreneurship (TIDE) Committee, this hour of TED Talk style short presentations will give you a glimpse of some of the most interesting new ideas on the horizon for your practice and your OR.





eXperience

the P4HB advantage



Biologically derived

Strong

Monofilament

Bioabsorbable

Predictable performance

Colonization resistance

In plastic surgery procedures, proper tissue support is an important factor in achieving lasting, natural-looking results. Tissue repaired with poly-4-hydroxybutyrate (P4HB) has been shown to be 2-4x stronger than native tissue.¹⁻⁶

GalaFLEX™ Scaffold is made from the proprietary P4HB technology developed by BD. The body elicits a positive immune response to P4HB to encourage natural healing from the start and provide support beyond the procedure.^{1,2,7-10}

Patients deserve support. Patients deserve GalaFLEX™ Scaffold.



Follow us
@GalaFLEXbyBD

Email: PRSorders@bd.com • Phone: 833.342.2073



To reach your dedicated
BD Plastic Surgery Navigator
scan the QR CODE or visit us at
galaflex.bd.com



INDICATIONS FOR USE: GalaFLEX™ Scaffold collection is indicated for use as a bioresorbable scaffold for soft tissue support and to repair, elevate, and reinforce deficiencies where weakness or voids exist that require the addition of material to obtain the desired surgical outcome. This includes reinforcement of soft tissue in plastic and reconstructive surgery, and general soft tissue reconstruction. GalaFLEX™ Scaffold collection is also indicated for the repair of fascial defects that require the addition of reinforcing or bridging material to obtain the desired surgical result. IMPORTANT SAFETY INFORMATION: Possible complications following implantation of GalaFLEX™ Scaffold collection include infection, seroma, pain, scaffold migration, wound dehiscence, hemorrhage, adhesions, hematoma, inflammation, extrusion, and recurrence of the soft tissue defect. For complete prescribing information, including indications for use, warnings, and precautions, consult the specific GalaFLEX™ Scaffold collection Instructions for Use. REFERENCES: 1. Preclinical data on file. Results may not correlate to clinical performance in humans. 2. Deeken, Corey R, and Brent D. Matthews. "Characterization of the mechanical strength, resorption properties, and histologic characteristics of a fully absorbable material (poly-4-hydroxybutyrate—PHASIX mesh) in a porcine model of hernia repair." *ISRN Surgery* 2013 (2013): 3. Choi, Joo Woo. "The Influences of Skin Visco-Elasticity, Hydration Level and Aging on the Formation of Wrinkles: a Comprehensive and Objective Approach." *Skin Research and Technology*, vol. 19, no. 1, 2012, 4. Vera, Martin. "Phases of Wound Healing: The Breakdown." *Wound Source*. Accessed on Nov 13, 2020. www.woundsource.com. 5. Levenson SM, Geveer EF, Crowley LV, Oates JF 3rd, Berard CW, Rosen H. The Healing of Rat Skin Wounds. *Ann Surg*. 1965;161(2):293-308. 6. Native abdominal wall tissue strength adapted from Deeken 2013 (69.7N +/- 13.6). 7. Pineda Molina C, Giglio R, Gandhi RM, Sicari BM, Londono R, Hussey GS, et al. Comparison of the host macrophage response to synthetic and biologic surgical meshes used for ventral hernia repair. *J Immunol Regen Med*. (2019) 3:13-25. 8. Stoakes NFN, Scott JR, Badhwar A, Deeken CR, Voeller GR. Characterization of host response, resorption, and strength properties, and performance in the presence of bacteria for fully absorbable biomaterials for soft tissue repair. *Hernia*. (2017) 21 (5):771-82. doi: 10.1007/s10029-017-1638-3. 9. Pineda Molina C, Hussey GS, Eriksson J, et al. 4-Hydroxybutyrate Promotes Endogenous Antimicrobial Peptide Expression in Macrophages. *Tissue Eng Part A*. 2019;25(9-10):693-706. 10. Pineda Molina C, Hussey GS, Liu A, Eriksson J, D'Angelo WA, Badyak SF. Role of 4-hydroxybutyrate in increased resistance to surgical site infections associated with surgical meshes. *Biomaterials*. 2021;267:120493.

BD, the BD logo and GalaFLEX are trademarks of Becton, Dickinson and Company or its affiliates. © 2026 BD. All rights reserved. BD-139003 (04/26)

Pre-Registered Attendees

Express Check-In will be available at the George R. Brown Convention Center. Bring a copy of your registration confirmation to an Express Check-In kiosk for expedited service. All confirmations will include a barcode that will allow for easy scan-and-go access.

On-Site Registrants

Visit the On-Site Registration Desk at the Houston Convention Center.

Thursday, Oct. 15	6:30 a.m. - 5:00 p.m.
Friday, Oct. 16	7:00 a.m. - 6:00 p.m.
Saturday, Oct. 17	7:00 a.m. - 5:00 p.m.
Sunday, Oct. 18	7:00 a.m. -12:00 p.m.

Times subject to change.

REGISTER ONLINE

PlasticSurgeryTheMeeting.com

Cancellation, Refund and Credit Card Authorization Policy

Cancellations and requests for refunds must be submitted in writing (email, fax or mail) and are subject to approval by ASPS. If approved, refunds will be issued in the original form of payment and in accordance with the following schedule:

On or before Aug. 6

100% refund less a \$50 processing fee

Aug. 7 - Sept. 24

50% refund less a \$50 processing fee

On or after Sept. 25

No refunds issued

Barcode Access

Each registrant will receive a barcoded badge, which is encoded with access to registered courses and events. This badge will be scanned for entry into each course or event, as well as used for information exchange in the Exhibit Hall.

Registration Category		Early Bird Pricing Until 8/6	
		In-Person	On-Demand
ASPS, ASMS Members	ASPS/ASMS Active Member, Associate, International Member and Candidate for Membership	\$1,095	\$925
	ASPS/ASMS Life Active Member	FREE	FREE
	ASPS International Candidate	\$1,095	\$925
	ASPS/ASMS Resident/Fellow (RFF Member)	\$95	FREE
	Active Military Duty	FREE	FREE
	ASPS International Trainee (Subscriber)	\$95	FREE
	ASPS Affiliate Member	\$695	\$575
	Medical Student Forum (Subscriber)	\$95	FREE
Non-Member Physicians	Guest Physician [†] (copy of medical license required)	\$1,665	\$1,365
	International Trainee (Non-Subscriber) (verification letter from training program director required)	\$565	\$525
	Resident/Fellow (RFF Non-Member) [†] (verification letter from training program director required)	\$565	\$525
	Medical Student (Non-Subscriber)	\$565	\$525
Non-Member Medical and Industry Personnel	Plastic Surgery Team Member [†] (letter from physician employer required)	\$965	\$795
	Industry Research & Academic Personnel [†] (letter of verification required)	\$1,665	\$1,375
	Investment Analyst [†] (letter of verification required)	\$1,665	\$1,375
Guests	Guest	\$365	N/A
	Life Active Member Guest	\$235	N/A
	Children (15 years old or younger)	\$145	N/A

Visit the PSTM website for full details on all available registration types and deadlines.

[†]Subject to verification and approval by ASPS

LEARN ABOUT

JOURNAVX[®]

(suzetrigine) 50mg tablet



Actor portrayal.



Visit
JOURNAVXHCP.COM



If you are a formulary decision-maker, please find additional resources at
FORMULARYDECISIONS.COM

JOURNAVX is manufactured for Vertex Pharmaceuticals Incorporated. JOURNAVX, the JOURNAVX logo, Vertex, and the Vertex triangle logo are registered trademarks of Vertex Pharmaceuticals Incorporated. © 2026 Vertex Pharmaceuticals Incorporated | VXR-US-43-2600190 (v1.0) | 04/2026



AMERICAN SOCIETY OF PLASTIC SURGEONS
444 E. Algonquin Road
Arlington Heights, IL 60005-4664
USA

***The entire plastic surgery specialty is
convening in Houston, Oct. 15-18, 2026.***

PLAN NOW TO ATTEND PLASTIC SURGERY THE MEETING!

- Nearly 200 live education sessions covering aesthetic, reconstructive, practice management, wellness, research and technology topics
- A jam-packed exhibit hall with the latest products and services you need for your practice
- Networking receptions, luncheons and events to help you connect with friends and colleagues
- Add your team members:
Go to PlasticSurgeryTheMeeting.com to register you and your team all at once!



▶ SCAN ME to SAVE
on Registration